

# ECOPHON AKUSTO™ WALL C EXTRA BASS

WHERE SPEECH QUALITY MATTERS MOST



**Ecophon**  
SAINT-GOBAIN



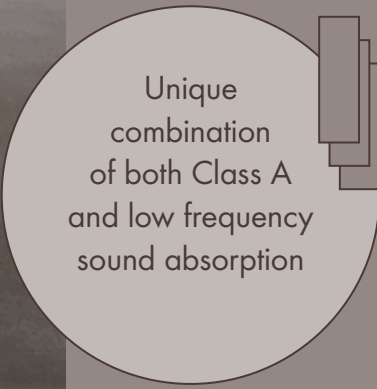
# ency

## **MAKING HEARING MORE INCLUSIVE**

Education is vital to both individuals and society. Therefore creating an inclusive environment for SEN (special educational needs) students will improve the learning experience. Types of learning difficulties may include:

- 
- Different types of hearing
  - Visual
  - Speech
  - Cognitive problems
- 

Students with, and without, learning difficulties benefit from low frequency noise absorption by hearing better and feeling increased comfort in their surroundings.



Unique  
combination  
of both Class A  
and low frequency  
sound absorption

# Low

## DEVELOPED FOR LEARNING ENVIRONMENTS

Creating an optimal acoustic environment in education is paramount to learning. It is vital to understand how different education settings need to cater to the needs of those in the room.

Akusto Wall C Extra Bass is a class A wall absorber system that increases speech understanding and lowers noise over a broad frequency spectrum. What makes Akusto Wall C Extra Bass unique is that it effectively reduces low frequency sounds. These include:

- 
- Mechanical ventilation
  - Scraping chairs
  - Closing doors
  - Footsteps
  - Voices
  - Traffic noise
- 

# freque



## AKUSTO WALL C EXTRA BASS OVERVIEW

Feature	Performance
<b>Circularity</b>	Minimum of 60% post-consumer recycled content. Product is fully recyclable.
<b>Indoor air quality</b>	Eurofins Indoor Air Comfort, French VOC A
<b>Fire Safety</b>	Akusto Wall C Extra Bass is tested to the Europe fire standard EN 13501-1 and classed A2-s1,d0
<b>Cleanability</b>	Daily dusting, vacuum cleaning and weekly wet wiping (Akutex FT surface). Weekly dusting and vacuum cleaning (Texona surface).
<b>Humidity resistance</b>	Class C, relative humidity 95% and 30° C, according to EN 13964:2014
<b>Environmental Footprint</b>	<p><b>Akusto Wall C Extra Bass/Texona</b> 10,8 Kg CO<sub>2</sub> equiv/m<sup>2</sup> (Akusto Wall C Extra Bass EPD in conformity with ISO 14025 / EN 15804)</p> <p><b>Akusto Wall C Extra Bass/Akutex FT</b> 10,4 Kg CO<sub>2</sub> equiv/m<sup>2</sup> (Akusto Wall C Extra Bass EPD in conformity with ISO 14025 / EN 15804)</p>

### Acoustics

THK mm	o.d.s. mm	$\alpha_p$ Practical sound absorption coefficient						$\alpha_w$	Sound absorption class
		125 Hz	250 Hz	500 Hz	1000 Hz	2000 Hz	4000 Hz		
80	80	0.65	1.00	0.95	1.00	1.00	1.00	1.00	A

### Technical assistance

For technical information, including installation, visit our website where you will be able to access videos and download guides.

We also have a technical team who will be able to assist you with any questions you may have, to talk to our team email [technical@ecophon.co.uk](mailto:technical@ecophon.co.uk) or call 01256 855250.



For more information go to:  
[www.ecophon.com/uk](http://www.ecophon.com/uk)

Or contact your nearest Ecophon representative.

## AKUSTO WALL C EXTRA BASS

Akusto Wall C Extra Bass increases absorption of lower frequency sounds, something that has been difficult to achieve. Until now.

- Normal wall panels have a much lower sound absorption in low frequencies, which is what makes Akusto Wall C Extra Bass so unique.
- The system includes Connect Shadow Profile. Akusto Wall C is visible while an added absorber is hidden behind the profile
- System thickness is 80 mm, due to the design it looks like 40 mm
- Length of panels is 2700 mm and width is 600 mm easily installed within the system

---

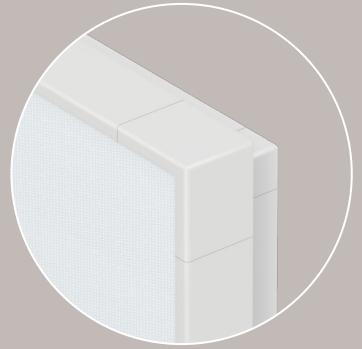
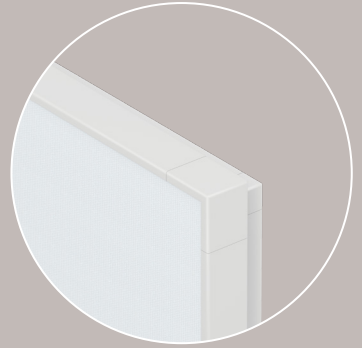
## COLOURS AND SURFACES

- Available in many different colours
- Choose from surfaces in Texona & Akutex FT

---

## INSTALLATION

- Connect Shadow Profile, grey 03
- Install diagram M535 for vertical installation
- Install diagram M547 for horizontal installation



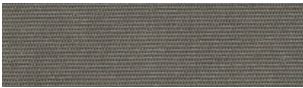
## ECOPHON TEXONA

If you want to create expressive sound absorbing wall solutions with a wide range of colours, Texona is the perfect choice. Texona has a smooth textured surface and is available in a variety of colours that allude to flavours.



### SEA SALT

Nearest NCS colour sample S 0500-N.  
Light reflectance 81%.



### PEPPER

Nearest NCS colour sample S 6502-Y.  
Light reflectance 17%.



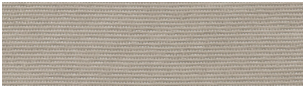
### GARLIC

Nearest NCS colour sample S 2502-Y.  
Light reflectance 52%.



### GINGER

Nearest NCS colour sample S 2005-Y30R.  
Light reflectance 56%.



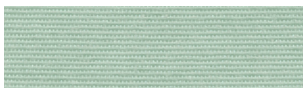
### OYSTER

Nearest NCS colour sample S 4005-Y20R.  
Light reflectance 32%.



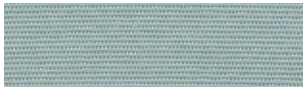
### SCALLOP

Nearest NCS colour sample S 1005-Y40R.  
Light reflectance 67%.



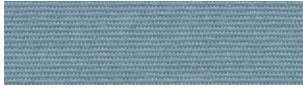
### THYME

Nearest NCS colour sample S 2010-B90G.  
Light reflectance 67%.



### SAGE

Nearest NCS colour sample S 3010-B30G.  
Light reflectance 41%.



### POPPY SEED

Nearest NCS colour sample S 3020-B10G.  
Light reflectance 28%.



### EUCALYPTUS

Nearest NCS colour sample S 5010-B30G.  
Light reflectance 23%.



### ACAI

Nearest NCS colour sample S 6020-R90B.  
Light reflectance 12%.



### PEACH

Nearest NCS colour sample S 1515-Y80R.  
Light reflectance 52%.



### GOJI

Nearest NCS colour sample S 3030-Y80R.  
Light reflectance 24%.



### LIQUORICE

Nearest NCS colour sample S 9000-N.  
Light reflectance 5%.

### NOTE

Colours may vary slightly between different production batches. Reproduction of colours vary between print and reality.

## CONTACT US

### Sales office, or order and stock information:

Tel: 01256 855220

Fax: 01256 850600

Email: [sales.office@ecophon.co.uk](mailto:sales.office@ecophon.co.uk)

### Technical Support

Tel: 01256 855250

Email: [technical@ecophon.co.uk](mailto:technical@ecophon.co.uk)

### Address

Saint-Gobain Ecophon, Monk Sherborne Road,  
Ramsdell, Tadley, RG26 5PP

Tel: 01256 850977

Fax: 01256 851550

Email: [info@ecophon.co.uk](mailto:info@ecophon.co.uk)

# COLOURS AND SURFACES

## AKUTEX™ FT

The Akutex label guarantees that the product carrying it has a superior surface technology. Our research and development will always focus on visual aspects, acoustic properties, working environment, architectural trends and environmental aspects. This ensures that Akutex is always one step ahead.



### WHITE FROST

Nearest NCS colour sample S 0500-N.  
Light reflectance 85%.



### OCEAN STORM

Nearest NCS colour sample S 4020-R90B.  
Light reflectance 24%.



### MORNING DRIZZLE

Nearest NCS colour sample S 1002-B.  
Light reflectance 69%.



### VOLCANIC ASH

Nearest NCS colour sample S 2002-Y.



### MOONLIGHT SKY

Nearest NCS colour sample S 7020-R90B.  
Light reflectance 7%.



### CLOUDY DAY

Nearest NCS colour sample S 1500-N.  
Light reflectance 62%.



### SILVER STONE

Nearest NCS colour sample S 4502-Y.  
Light reflectance 56%.



### GOLDEN FIELD

Nearest NCS colour sample S 1040-G90Y.  
Light reflectance 61%.



### PEACH ROSE

Nearest NCS colour sample S 1515-Y80R.  
Light reflectance 55%.



### SILK SLATE

Nearest NCS colour sample S 7000-N.  
Light reflectance 29%.



### SUNSET HEAT

Nearest NCS colour sample S 2070-Y60R.  
Light reflectance 20%.



### HIGHLAND FOG

Nearest NCS colour sample S 2005-G.  
Light reflectance 55%.



### GOJI BERRY

Nearest NCS colour sample S 3030-Y80R.  
Light reflectance 27%.



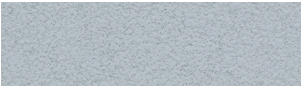
### RUBY ROCK

Nearest NCS colour sample S 4050-R10B.  
Light reflectance 7%.



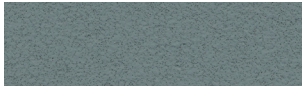
### SAGE GARDEN

Nearest NCS colour sample S 3010-B30G.  
Light reflectance 40%.



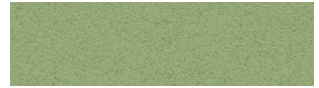
### SILENT STEAM

Nearest NCS colour sample S 2010-B.  
Light reflectance 45%.



### EUCALYPTUS LEAF

Nearest NCS colour sample S 5010-B30G.  
Light reflectance 23%.



### FRESH CLOVER

Nearest NCS colour sample S 3020-G40Y.  
Light reflectance 35%.



### SCALLOP SHELLS

Nearest NCS colour sample S 0804-Y50R.  
Light reflectance 76%.



### SUMMER FOREST

Nearest NCS colour sample S 6030-G10Y.  
Light reflectance 10%.



### WET SAND

Nearest NCS colour sample S 3020-Y30R.  
Light reflectance 35%.



### DARK DIAMOND

Nearest NCS colour sample S 9000-N.  
Light reflectance 4%.

## NOTE

Colours may vary slightly between different production batches. Reproduction of colours vary between print and reality.

Ecophon is the leading supplier of indoor acoustic solutions that improve working performance and quality of life. We believe in the difference sound can make to our everyday lives, and are passionate advocates for the importance of room acoustics to people's wellbeing – whatever the space, activity or need.

Having a sound effect on people is the principle that guides all we do. We're proud of the Swedish heritage and human approach that promise is founded on. Our uncompromising commitment to transparent sustainable practice. And, as members of the Saint-Gobain Group, to be doing our part in making the world a better home.



This publication shows products from Ecophon product range and those of other suppliers. The specifications are intended to provide a general guide to which products are most suitable for the preferences indicated. Technical data is based on results obtained under typical testing conditions or long experience in normal conditions. The specified functions and properties for products and systems are only valid on condition that instructions, installation diagrams, installation guides, maintenance instructions and other stated conditions and recommendations have been taken into consideration and followed. Deviation from this, such as changing specific components or products, will mean that Ecophon cannot be held responsible for the function, consequences and properties of the products. All descriptions, illustrations and dimensions contained in this brochure represent general information and shall not form part of any contract. Ecophon reserves the right to change products without prior notice. We disclaim any liability for misprints. For the latest information go to [www.ecophon.com/uk](http://www.ecophon.com/uk) or contact your nearest Ecophon representative. © Ecophon Group 2022

**Ecophon**  
SAINT-GOBAIN